



Viking Academy Trust



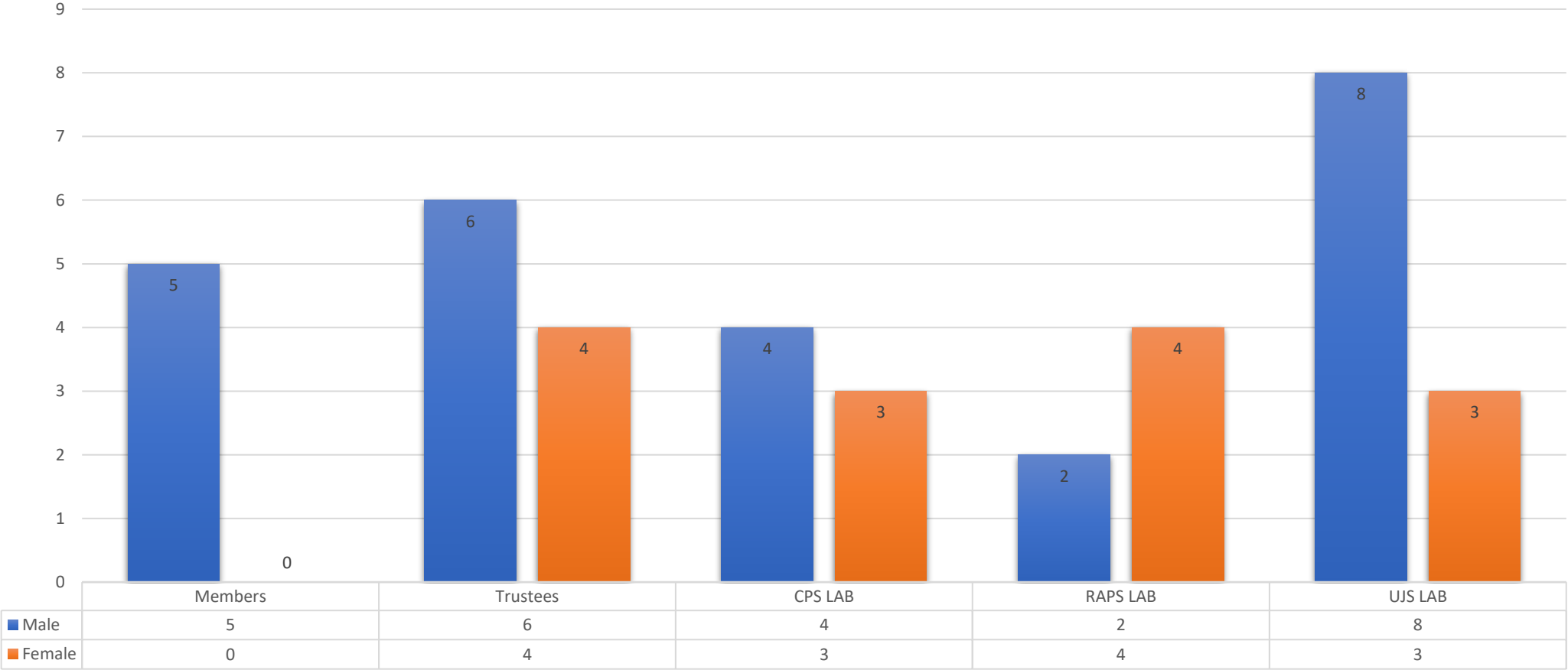
Viking Governance Equality & Diversity Monitoring



Empowering children through education: One Childhood One Chance



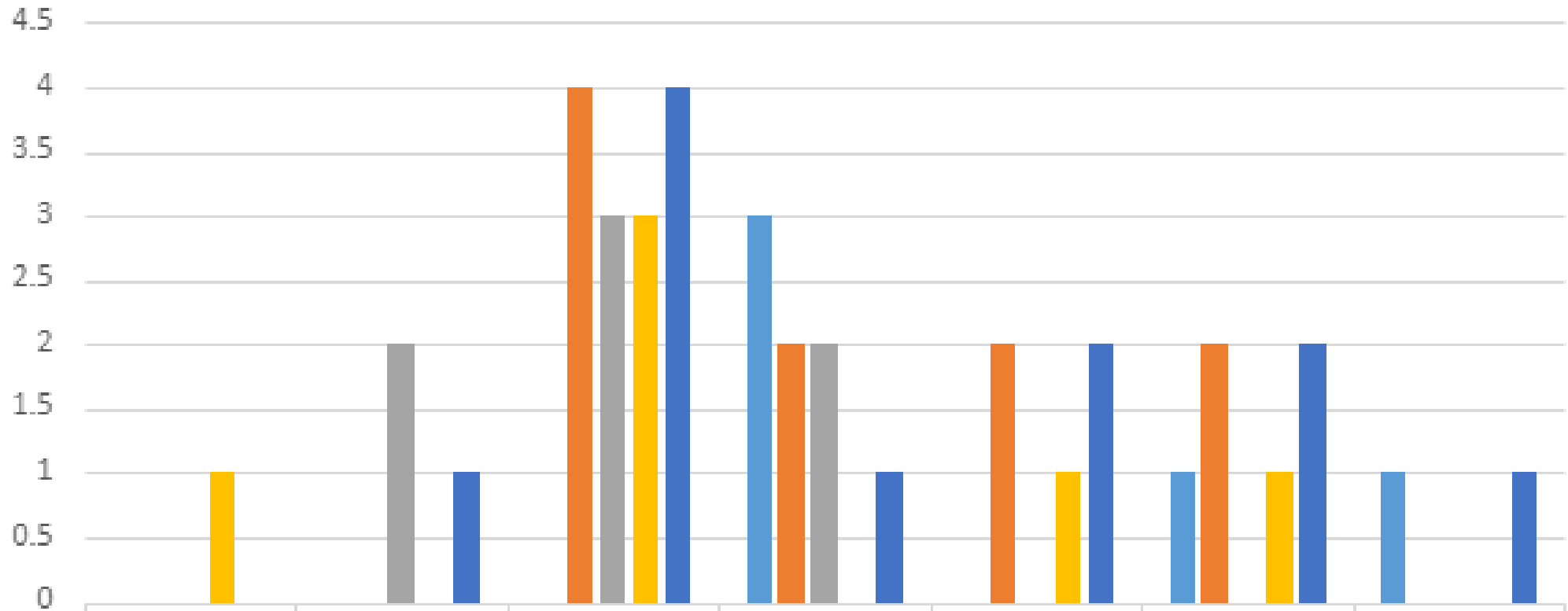
Gender



Male Female



Age range

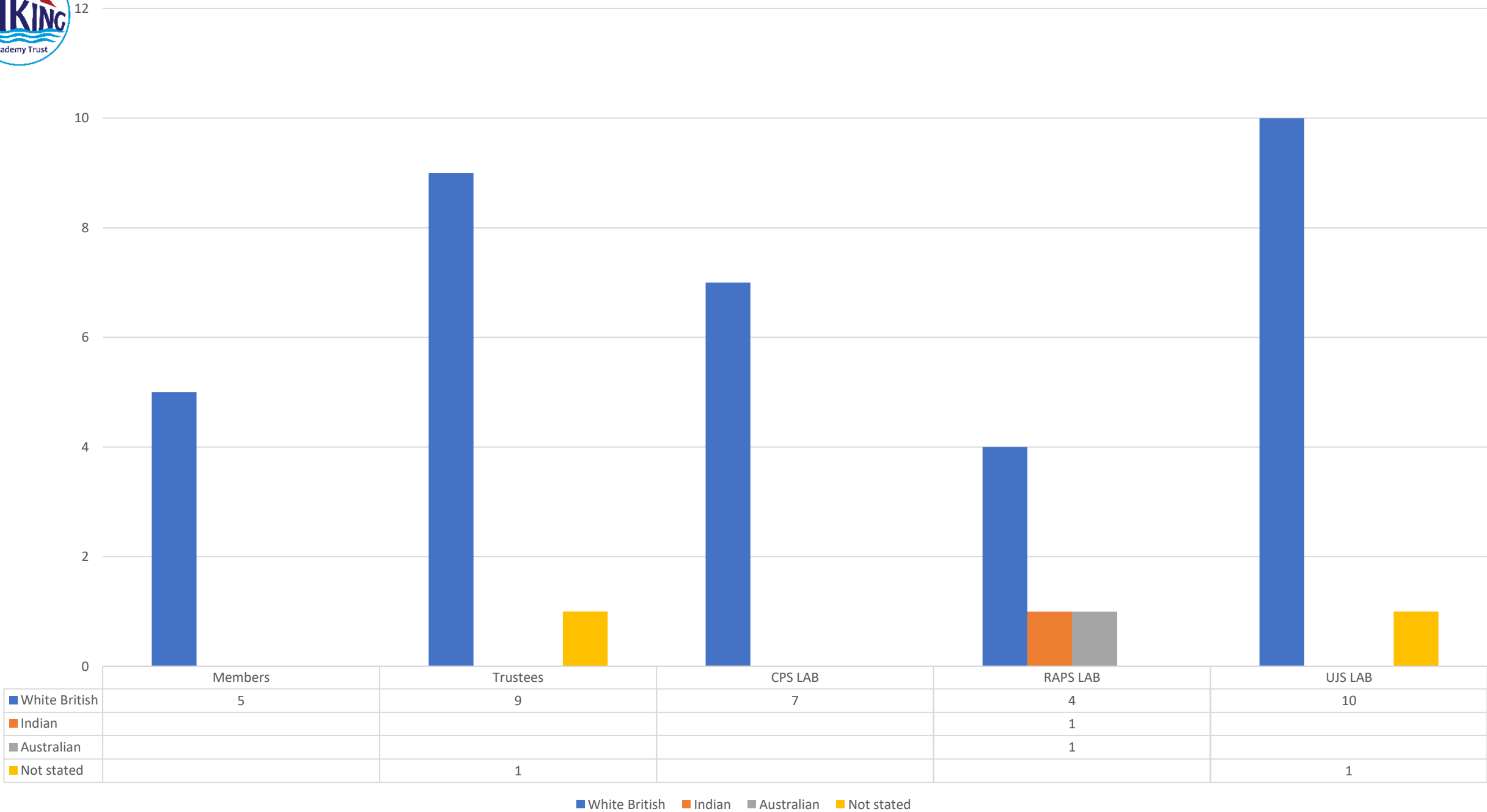


Members				3		1	1
Trustees			4	2	2	2	
CPS LAB		2	3	2			
RAPS LAB	1		3		1	1	
UJS LAB		1	4	1	2	2	1

Members Trustees CPS LAB RAPS LAB UJS LAB



Ethnic origin





Data

Gender	Male	Female					
Members	5	0					
Trustees	6	4					
CPS LAB	4	3					
RAPS LAB	2	4					
UJS LAB	8	3					
Ethnic origin	White British	Indian	Australian	Not stated			
Members	5						
Trustees	9			1			
CPS LAB	7						
RAPS LAB	4	1	1				
UJS LAB	10			1			
Age range	18-29	30-39	40-49	50-59	60-69	70-79	80+
Members				3		1	1
Trustees			4	2	2	2	
CPS LAB		2	3	2			
RAPS LAB	1		3		1	1	
UJS LAB		1	4	1	2	2	1



Further Information

https://www.kent.gov.uk/_data/assets/pdf_file/0009/8559/Cultural-diversity-in-Kent.pdf.pdf-

4.5% Thanet is BME (highest in Cliftonville).

<https://hub4leaders.co.uk/learning-hub/blog/the-importance-of-a-diverse-governing-board/> includes a short paragraph on action Boards can take (NB LAB recruitment)